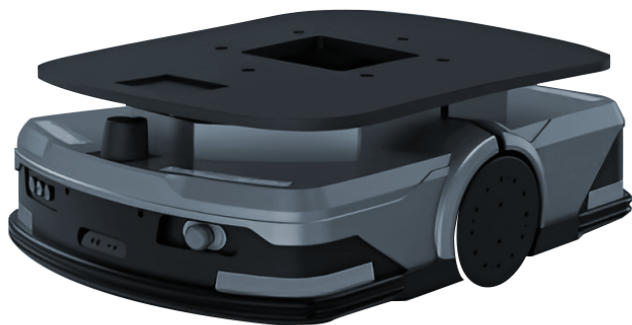


PLATFORM LIFTER

AB-FLB-PL06



ATOMBOTIX

Multiple Safety Protections



Have multiple level safety protections including front and rear laser detection, front and rear binocular detection, 360 degree anti collision edges, and emergency stop buttons

Large - scale Cargo Handling



Be able to handle up to 600kg of cargo, supporting lifting, carrying, rotating, and lowering operations

Autonomous Positioning and Navigation



Achieve precise positioning through technologies such as QR codes, laser SLAM, and texture

Equipment Status Indication



Indicate various states of the vehicle through multiple lighting effects

Flexible Motion Control



Employ two - wheel differential speed drive to support forward, backward, and rotational motion controls, ensuring smooth opera-

Friendly Human - machine Interaction



Support liquid - crystal touch screens and audio alarm prompts

Intelligent Power Management



Support multi - level power threshold control. It automatically recharges when the power is low and resumes work after charging is complete

Wireless Network Communication



Support WiFi and 5G network communication, enabling unobstructed operation within the network coverage area

Model	AB-FLB-PL06
Feature	
Drive Mode	Differential drive of two wheels
Dimensions	950 × 650 × 250 mm
Rotation Diameter	963 mm
Self-weight	130 kg
Rated Load	600 kg
Chassis Ground Clearance	25 mm
Lifting Panel Size	850×600 mm
Lifting Drive	Electric
Lifting Height	60 mm

Performances	
Rated Operating Speed (Rated Load/No Load)	1.5 m/s; 1.9 m/s
Acceleration (Rated Load/No Load)	0.3 m/s ² ; 0.6 m/s ²
Rotation Speed (Full Load/No Load)	100°/s; 200°/s
Battery	
Battery Type	Lithium iron phosphate
Capacity/Rated Voltage	24 Ah/48V
Charge-Discharge Cycle Times	1,500 times
Rated Working Condition Endurance Time	8 h
Charging Time After Complete Discharge	≤1.5 h
Other Parameters	
Human-Computer Interaction Mode	Touch screen
Navigation Mode	Laser SLAM or 2D code
Front Laser Obstacle Avoidance (Quantity/Installation Height)	1 piece/201.5 mm
Opening Angle	250°
3D Vision Obstacle Avoidance	Optional
Rear Ultrasonic	Optional
Emergency Stop Buttons	2 pieces (front and rear each 1)
Contact Protection	Piezoelectric edge switch
Acoustic-Optic Alarm	Standard
Chassis Damping Mode	Two-stage floating chassis
Climbing Capacity	≤5%/2.8°
Step Capacity	≤5 mm
Gutter Crossing Capacity	≤30 mm
Signal	Supports dual-band Wi-Fi (2.4 GHz and 5 GHz), with wireless signal strength ≥ -70 dBm.
Humidity	Relative humidity 10%–90% without condensation
Temperature	Working area: -10°C – 45°C Charging area: 0°C – 45°C

Product Size

